

Document Reference: NPS/002/032		Document Type: Code of Practice	
Version: 3.0	Date of Issue: January 2021	Page: 1	of 21

NPS/002/032 - Technical Specification for Metering Base/Panel Unit for Connection to High Voltage Metering Circuit Breakers in Accordance with CoP3 up to a Circuit Capacity not Exceeding 10 MVA

1. Purpose

The purpose of this document is to detail the requirements of Northern Powergrid (the Company) in relation to the technical requirements for a metering base/panel unit and associated metering wiring loom for three phase systems typically operating at voltages up to 20kV. This is in accordance with requirements of Balancing and Settlement Code, Code of Practice 3 (CoP3).

This document supersedes the following documents, all copies of which should be destroyed.

Document Reference	Document Title	Version	Published Date
NPS/002/032	Technical Specification for Metering Base/Panel Unit for Connection to High Voltage Metering Circuit Breakers in Accordance with CoP3 up to a Circuit Capacity not Exceeding 10 MVA	2.1	July 2019

2. Scope

This document refers to the specification requirements of the Company with respect to a metering base/panel unit that will typically connect via a metering wiring loom to a HV (20kV and below) metering circuit breaker. All of which have already been fitted with suitable voltage transformers (VTs), current transformers (CTs) and metering voltage fuses/links as required in Northern Powergrid specifications:

- NPS/003/014 – Technical Specification for Ground Mounted 11 & 20kV Distribution Switchgear
- NPS/003/006 – Technical Specification for Primary 11kV and 20kV Switchgear
- NPS/003/029 – Technical Specification for Retrofit 11kV & 20kV Circuit Breakers

HV metering circuit breakers are used to provide power supplies to commercial and industrial premises with circuit capacities typically up to 10MVA.

To ensure the metering base/panel unit functions correctly, it is assumed the HV metering circuit breaker will have the following components pre-installed:

- metering VTs and associated wiring,
- metering CTs and associated wiring, and,
- metering voltage fuses/links and associated wiring.

This document **only** covers the following equipment contained within or connected to the metering base/panel unit and the metering base/panel unit itself:

- metering base/panel unit (houses the terminal test block and provides a mounting point for the supplier meters),
- terminal test block with fuse/link terminals and CT shorting links, and,

Document Reference:		NPS/002/032	Document Type:		Code of Practice			
Version:	3.0	Date of Issue:	January 2021	Page:	2	of	21	

- the metering wiring loom and associated cable glands (connects the terminal test block to the VTs/CTs and metering voltage fuses/links).

Suppliers shall provide details of any periodic inspection and maintenance information requirements in Appendix 5 – Pre-commission Testing, Routine Inspection and Maintenance Requirements.

Technical documents referenced within this specification refer to the latest versions of the relevant International Standards, British Standard Specifications, all relevant Energy Networks Association Technical Specifications (ENATS) and Balancing and Settlement Code, Metering Codes of Practice current at the time of supply.

The following appendices form part of this technical specification:

- Appendix 1 – Product Requirements,
- Appendix 2 - Logistical Requirements,
- Appendix 3 - Self Certification Conformance Declaration,
- Appendix 4 - Addendum to Supplier Requirements,
- Appendix 5 – Pre-commission Testing, Routine Inspection and Maintenance Requirements,
- Appendix 6 - Technical Information Check List,
- Appendix 7 – List of Example Meter Types,
- Appendix 8 – Metering Base/Panel Unit for CoP3 Arrangement – Typical Example,
- Appendix 9 - Terminal Test Block – Typical CoP3 Layout,
- Appendix 10 - CT and Metering Voltage Fuses/Links – Labelling, and,
- Appendix 11 – CT/VT Metering Unit Label.

Document Reference:		NPS/002/032	Document Type:		Code of Practice			
Version:	3.0	Date of Issue:	January 2021	Page:	3	of	21	

2.1. Table of Contents

1. Purpose.....	1
2. Scope	1
2.1. Table of Contents.....	3
3. Technical Requirements.....	4
3.1. Metering Requirements.....	4
3.1.1. Voltage and Current Transformers (VT & CT)	4
3.1.2. Metering Voltage Fuses/Links.....	4
3.1.3. Terminal Test Block.....	4
3.1.4. Metering Base/Panel Unit.....	5
3.1.5. Metering Wiring Loom.....	5
3.1.6. CT/VT Metering Unit Label	5
4. References	6
4.1. External Documentation	6
4.2. Internal Documentation	6
4.3. Amendments from Previous Version	7
5. Definitions	7
6. Authority for Issue	8
6.1. CDS Assurance	8
6.2. Author	8
6.3. Technical Assurance.....	8
6.4. Authorisation	8
Appendix 1 – Product Requirements	9
Appendix 2 – Logistical Requirements	10
Appendix 3 – Self Certification Conformance Declaration.....	11
Appendix 4 – Addendum to Supplier Requirements	14
Appendix 5 – Pre-commission Testing, Routine Inspection and Maintenance Requirements	15
Appendix 6 – Technical Information Check List.....	16
Appendix 7 – List of Example Meter Types	17
Appendix 8 – Metering Base/Panel Unit for CoP3 Arrangement – Typical Example	18
Appendix 9 – Terminal Test Block – Typical CoP3 Layout	19
Appendix 10 - CT and Metering Voltage Fuses/Links – Labelling.....	20
Appendix 11 –CT/VT Metering Unit Label	21

Document Reference:		NPS/002/032	Document Type:		Code of Practice		
Version:	3.0	Date of Issue:	January 2021	Page:	4	of	21

3. Technical Requirements

3.1. Metering Requirements

It is assumed that the HV metering circuit breaker will have the following equipment (3.1.1 and 3.1.2) already installed within them.

3.1.1. Voltage and Current Transformers (VT & CT)

Although not specified/required under this document, further detail can be found in:

- NPS/003/014 – Technical Specification for Ground Mounted 11 & 20kV Distribution Switchgear,
- NPS/003/006 – Technical Specification for Primary 11kV and 20kV Switchgear,
- NPS/003/029 – Technical Specification for Retrofit 11kV & 20kV Circuit Breakers.

3.1.2. Metering Voltage Fuses/Links

Although not specified/required under this document, further detail can be found in:

- NPS/003/014 – Technical Specification for Ground Mounted 11 & 20kV Distribution Switchgear,
- NPS/003/006 – Technical Specification for Primary 11kV and 20kV Switchgear,
- NPS/003/029 – Technical Specification for Retrofit 11kV & 20kV Circuit Breakers.

Please Note: The following items (3.1.3, 3.1.4, 3.1.5, 3.1.6) are required to provide a metering facility for the provision/installation of metering equipment and as such form part of this specification.

3.1.3. Terminal Test Block

The terminal test block shall be secured on a suitable DIN rail within a metering base/panel unit.

Both the CT wiring and metering VT fuse/link wiring shall terminate into the terminal test block.

The terminal test block shall consist of:

- **CT Connections** - 2 x terminals labelled for each of the 2 x CTs and include the functionality to short circuit each of the individual CTs at the terminal test block. The wiring from the CTs shall be connected to these terminals.

Removable linking block to be installed across all CT S2 terminals on incoming side of the terminal test block as described in Appendix 9.
- **Connections for Meters Supplied by Others** – The outgoing side of the terminal test block shall have shorting loops (coloured white) installed across each CT, which shall be removed once the meters are connected as described in Appendix 9.
- **Voltage Connections** - The wiring from the metering VT fuses/links shall be connected to the incoming connections of the voltage terminals. 3 x metering voltage connection terminals (3 phase) wired to 8 x secondary fused/linked voltage connections for 3 phase (for both main and check meters) with an additional 2 connections (off L1 and L2 phases) for the meter communications equipment. L1 and L3 secondary phase connections shall be fused at 2 amps with a link installed in L2 secondary connections.
- **Earth Connections** - An earth terminal suitable for connecting 1 x 2.5mm² earth cable.

The terminals that form the terminal test block will be tested and approved to BS EN 60947-7-1. All wiring integral to the design/construction of the terminal test block shall be 2.5mm² single core copper PVC insulated flexible cables (unless otherwise stated) and comply with the requirements of BS 6231.

All wiring integral to the design/construction of the terminal test block shall be standard numbering in accordance with ENA TS 50-19. See Appendix 10 - CT and Metering Voltage Fuses/Links - Labelling.

All metal DIN rails/support brackets shall be suitably earth bonded.

See Appendix 9 which shows a typical terminal test block CoP3 layout.

Document Reference:		NPS/002/032	Document Type:		Code of Practice			
Version:	3.0	Date of Issue:	January 2021	Page:	5	of	21	

3.1.4. Metering Base/Panel Unit

The metering base/panel shall be a polycarbonate, or glass fibre impregnated shell enclosure and shall be finished in a subtle colour e.g. RAL 7035 – light grey. It shall incorporate the terminal test block mounted upon a DIN rail. It shall be connected to the HV metering circuit breaker with the metering wiring loom described in 3.1.5. The construction of the material shall be such that it can be easily drilled to create access points for the metering wiring loom and connection of the supplier meter.

The unit shall be so designed that electricity meters as described in Appendix 7 – List of Example Meter Types can be easily fixed to the front of the hinged door and is capable of supporting the associated meter weight in an open/closed position.

Metering base/panel units are to be suitable for internal wall mounting in public locations, but shall only allow access to internal components by appropriately authorised persons. Metering base/panel shall have a minimum of 4 wall mount fixing holes of 7.5mm diameter.

The unit shall have a hinged door to gain access to the terminal test block allowing connection of the meter. The hinge arrangement shall normally be fitted to the left side of the unit.

The hinged door shall be secured with captive screw(s), which shall be capable of being sealed in the closed position using standard galvanised sealing wire of maximum diameter of 2mm.

The construction of the assembly shall be such that the possibility of deliberate damage and the removal of fastenings from the outside are minimised. The assembly shall be intruder resistant and provide ingress protection to IP65 in accordance with IEC BS EN 60529 and impact resistance to IK08 or above in accordance with IEC BS EN 62262. Ferrous metallic parts shall be protected against corrosion, sufficient to pass the tests set out in sub clause 10.2.2 of BS EN 61439-5 and 8.1.2 of BS EN 61439-1 (severity test A).

The dimensions of the metering base/panel shall be suitable to house main and check meters (in line with CoP 3) on the front of the unit. Meter type examples are presented in Appendix 7 – List of Example Meter Types. Typical dimensions for meter base/panel units are nominally H=360mm, W=540mm, D=180mm as can be seen in Appendix 8 – Metering Base/Panel Unit for CoP3 Arrangement – Typical Example.

3.1.5. Metering Wiring Loom

CTs to Terminal Test Block - A metering wiring loom shall be required to connect the CT secondary terminals and metering voltage connections in the HV metering circuit breaker with the terminal test block in the metering base/panel unit.

The metering wiring loom shall be 2.5mm² copper stranded multicore conductor, XLPE/PVC insulation, PVC sheathed, steel wire armoured (SWA) cable to BS 5467. Further detail can be found in NPS/002/018 – Technical Specification for Pilot, Control and Telephone Cables.

The multicore cable shall have a minimum of 12 cores. The cores shall be white insulation with number identification throughout its length.

Suitable cable glands to BS 6121, Part 1 of 25mm diameter shall be provided to adequately terminate the 12 x 2.5mm² copper stranded SWA cable between the metering circuit breaker and the metering base/panel unit.

The wiring loom labelling for the CT and metering voltage connections will be standard numbering in accordance with ENA TS 50-19. See Appendix 10 – CT and Metering Voltage Fuses/Links - Labelling.

3.1.6. CT/VT Metering Unit Label

The unit shall be delivered with a CT/VT label in line with the requirements of MOCOPA, Appendix 2, section A2.3. See Appendix 11 - CT/VT Metering Unit Label.

Document Reference:		NPS/002/032	Document Type:		Code of Practice			
Version:	3.0	Date of Issue:	January 2021	Page:	6	of	21	

4. References

The terminal test block, metering base/panel unit and wiring loom shall comply with the relevant International Standards, British Standard Specifications and all relevant Energy Networks Association Technical Specifications (ENATS) current at the time of tendering, except where varied by this standard. In respect the following documents are particularly relevant.

4.1. External Documentation

Reference	Version / Date	Title
CoP 3	2019	Balancing and Settlement Code, Code of Practice 3, Code of practice for the metering of circuits with a rated capacity not exceeding 10 MVA for settlement purposes
BS EN 60947-7-1	2009	Low-voltage switchgear and controlgear - Part 7-1: Ancillary equipment - Terminal blocks for copper conductors
BS EN 60529:1992 + A2:2013	1992	Degrees of protection provided by enclosures (IP Codes)
IEC 62262 Ed 1	2002	Degrees of protection provided by enclosures for electrical equipment against external mechanical impacts (IK code)
BS EN 61439-1	2011	Low-voltage switchgear and controlgear assemblies. Part 1: General rules
BS EN 61439-5	2015	Low-voltage switchgear and controlgear assemblies. Part 5: Assemblies for power distribution in public networks
BS 5467	2016	Electric cables. Thermosetting insulated, armoured cables of rated voltages of 600/1 000 V and 1 900/3 300 V for fixed installations. Specification
BS 6121-1	2005	Mechanical cable glands. Armour glands. Requirements and test methods
BS 6231	2006	Electric cables – Single core PVC insulated flexible cables of rated voltage 600/1000 V for switchgear and controlgear wiring
MOCOPA	2020	Meter Operation Code of Practice Agreement

The supplier shall provide with the tender full technical details of the equipment offered and shall indicate any divergence from these standards or specifications.

4.2. Internal Documentation

Reference	Version / Date	Title
IMP/001/010	7.0/Nov 2018	Code of Practice for Standard Arrangements for Customer Connections
IMP/001/912	4.0/Jul 2018	Code of Practice for the Economic Development of the HV System
NPS/002/018	5.0/Jul 2018	Technical Specification for Pilot, Control and Telephone Cables.
NPS/002/031	2.1/Jul 2019	Technical Specification for Metering Base/Panel Unit for Connection to Heavy Duty Cut-outs from 100-500 Amps with Integral Current Transformers and LV Air Circuit Breakers in accordance with CoP5 up to 1 MW
NPS/003/006	4.0/Jan 2017	Technical Specification for Primary 11kV and 20kV Switchgear
NPS/003/014	5.0/Sept 2020	Technical Specification for Ground Mounted 11 & 20kV Distribution Switchgear
NPS/003/029	1.3/Feb 2016	Technical Specification for Retrofit 11kV & 20kV Circuit Breakers

Document Reference:		NPS/002/032	Document Type:		Code of Practice			
Version:	3.0	Date of Issue:	January 2021	Page:	7	of	21	

4.3. Amendments from Previous Version

Reference	Title
3.1.3 Terminal Test Block	# Connections for Meter Supplied by Others – The shorting loops on the outgoing side of the terminal test block has reference to confirm they shall be coloured white. # Additional clarification with regard to the terminal test block integral wiring added to align with Appendix 9 - Terminal Test Block – Typical Layout.
4.1 External Documentation	Section updated to reference latest documentation.
4.2 Internal Documentation	Section updated to reference latest documentation.
6.0 Authority for Issue	# H Jones replaced with W Lacey.
Appendix 10 – CT and Metering Voltage Fuses/Links - Labelling	Section updated to reference metering voltage links.
Appendix 9 - Terminal Test Block – Typical Layout	Diagram updated to represent latest wiring layout and changes to the document. Specific changes as follows: # CT shorting loops (which are removed following meter installation) to be coloured white. # Local metering voltage fuse/link label descriptions updated.
General	# Reference included to metering voltage links.

5. Definitions

Term	Definition
CoP	Code of Practice
CT	Current transformer
DIN	Deutsches Institute Fur Normung (German Institute for Standardisation)
ENA TS	Energy Networks Association Technical Specifications
HV	11kV to 20kV in terms of this document
kV	kilovolt
MOCOPA	Meter operation code of practice agreement
MVA	Megavolt ampere
PVC	Polyvinyl chloride
SWA	Steel wire armoured
The Company	Northern Powergrid
VT	Voltage transformer
XLPE	Cross linked polyethylene

Document Reference:		NPS/002/032	Document Type:		Code of Practice			
Version:	3.0	Date of Issue:	January 2021	Page:	8	of	21	

6. Authority for Issue

6.1. CDS Assurance

I sign to confirm that I have completed and checked this document and I am satisfied with its content and submit it for approval and authorisation.

		Date
Liz Beat	Governance Administrator	21/01/2021

6.2. Author

I sign to confirm that I have completed and checked this document and I am satisfied with its content and submit it for approval and authorisation.

Review Period - This document should be reviewed within the following time period.

Standard CDS review of 3 years?	Non Standard Review Period & Reason	
No	Period: 5 years	Reason: Update will be dictated by contract renewal date or any significant changes in the specification or documents referenced.
Should this document be displayed on the Northern Powergrid external website?		Yes
		Date
Paul Hollowood	Policy and Standards Engineer	11/11/2020

6.3. Technical Assurance

I sign to confirm that I am satisfied with all aspects of the content and preparation of this document and submit it for approval and authorisation.

		Date
D Gazda	Senior Policy and Standards Engineer	13/11/2020
Michael Crowe	Technical Services Manager	27/11/2020
Steve McDonald	General Manager West Yorkshire	23/11/2020
Warren Lacey	Metering Specialist	17/11/2020
Mick Emsley	Policy and Standards Manager	13/11/2020

6.4. Authorisation

Authorisation is granted for publication of this document.

		Date
Greg Farrell	Head of System Engineering	15/01/2021

Document Reference:		NPS/002/032	Document Type:		Code of Practice			
Version:	3.0	Date of Issue:	January 2021		Page:	9	of	21

Appendix 1 – Product Requirements

Description	Commodity Code
HV (CoP3) metering base/panel unit including terminal test block, cable glands and wiring identification labels	216156

Supporting evidence of compliance with type tests shall be submitted with the completed tender document.

Manufacturers may provide alternative tenders for items not complying with the above specification. This shall be clearly stated together with detailed descriptions of any variation from the specification, together with drawings and test results.

The supplier shall provide with the tender full technical details of the equipment offered and shall indicate any divergence from these standards or specifications.

Document Reference:		NPS/002/032	Document Type:		Code of Practice			
Version:	3.0	Date of Issue:	January 2021	Page:	10	of	21	

Appendix 2 – Logistical Requirements

To enable the Company to store the product(s) in accordance with the manufacturer's recommendations the Tenderer shall provide details of the recommended storage environment with respect to each tendered product.

Details shall be provided where relevant, in respect of the minimum and maximum exposure levels, frequency of exposure and duration of exposure of the packaged item with respect to;

- Ambient temperature
- Atmospheric corrosion
- Humidity
- Impact
- Water
- Vibration
- Dust
- Solar radiation

The Tenderer shall ensure that each item is suitably packaged and protected to enable storage in an outdoor environment whilst maintaining the product and packaging as "fit for service" prior to installation.

All packaging shall be sufficiently durable giving regard to the function, reasonable use and contents of the packaging. Where product packages tendered are made up of sub packages all the sub packages shall unless varied by this specification, be supplied securely packaged together. Where items are provided in bagged/boxed form the material from which the bags are manufactured shall be capable of sustaining the package weight and resisting puncture by the materials within.

Tenderer shall submit at the time of tendering the details of the proposed packaging (i.e. materials composition and structure) to be used for each product. Where the Tenderer is unable to provide packaging suitable for outdoor storage then this should be stated at the time of tender.

In order to maximise storage space all palletised goods shall be supplied in standard returnable box pallets with the following specification. Where applicable, suppliers shall also indicate the maximum number of units of each product that are storable per box pallet.

- Size - 1200mm (w) x 1000mm (d) x 750mm (h)
- Weight (empty) – Up to 33kg
- Load Capacity – Up to 450kg
- Maximum Stacking Capacity – 10 High

Suppliers shall also include details of the type of material used to manufacture the box pallets.

The Company will give consideration to innovative alternatives to this specification.

Clearly legible, easily identifiable, durable and unambiguous labelling shall be applied to each individual and where relevant, multiple package of like products. Where products packages tendered are made up of sub packages each sub packages shall be marked. As a minimum requirement the following shall be included;

- Manufacturer's trademark or name
- Supplier's trademark or name
- Description of item
- Date of packaging and/or batch number
- Northern Powergrid product code
- Weight
- Shelf Life

Tenderer shall submit at the time of tendering a sample of the proposed labelling for each product package type.

Document Reference:		NPS/002/032	Document Type:		Code of Practice		
Version:	3.0	Date of Issue:	January 2021		Page:	11	of 21

Appendix 3 – Self Certification Conformance Declaration

HV metering panel/base unit including terminal test block and metering wiring looms shall comply with the latest issues of the relevant national and international standards, including IEC 61439. Additionally this technical specification is intended to amplify and/or clarify requirements relating to these Standards.

This self-declaration sheet identifies the clauses of the aforementioned standards relevant to metering panel/base units including terminal test block and metering wiring loom) for use on the Company distribution network. The manufacturer shall declare conformance or otherwise, clause by clause, using the following levels of conformance declaration codes.

Conformance declaration codes

N/A = Clause is not applicable/ appropriate to the product

Cs1 = The product conforms fully with the requirements of this clause

Cs2 = The product conforms partially with the requirements of this clause

Cs3 = The product does not conform to the requirements of this clause

Cs4 = The product does not currently conform to the requirements of this clause, but the manufacturer proposes to modify and test the product in order to conform.

Manufacturer / Supplier:

Manufacturer / Supplier Product Reference:

Northern Powergrid Product Reference (Commodity Code):

Details of the Product Type: (e.g. Voltage, Conductor Type and Size)

Name:

Signature:

Date:

Instructions for completion

- When Cs1 code is entered the supplier shall provide evidence to confirm conformance.
- When any other code is entered the reason and supporting evidence for non - conformance shall be entered.
- Prefix each remark with the relevant 'BS EN' 'IEC' or 'ENATS' as appropriate.
- Provide technical data sheets and associated drawings for each product.

NOTE: One sheet shall be completed for each type of cable offered.

Document Reference:		NPS/002/032	Document Type:		Code of Practice			
Version:	3.0	Date of Issue:	January 2021		Page:	12	of	21

NPS/002/032 – HV metering panel/base unit including terminal test block and metering wiring loom				
Clause/Sub-clause	Clause / Requirements	Conformance Code	Evidence Reference	Remarks / Comments
3.1.3 Terminal Test Block	To meet the requirements of 3.1.3			
3.1.4 Metering Base/Panel Unit (Fixings)	4 x 7.5mm (internal) “key hole” Type			
3.1.4 Metering Base/Panel Unit (Front Access)	The front panel shall be pre drilled to accept the meters identified in Appendix 7 and drawing in Appendix 8 It shall be suitably hinged for access, taking account of the attached meter It shall be able to adequately support the weight of the meter in an open/closed position			
	Secured by captive screws & secured by accepting 2mm sealing wire			
3.1.4 Metering Base/Panel Unit	To meet the requirements of 3.1.4			
3.1.5 Metering Wiring Loom	To meet the requirements of 3.1.5			
3.1.5 Metering Wiring Loom (Cable gland)	To meet the requirements of 3.1.5			
3.1.6 CT/VT Metering Unit Label	To meet the requirements of 3.1.6			

Document Reference:		NPS/002/032		Document Type:		Code of Practice			
Version:	3.0	Date of Issue:		January 2021		Page:	13	of	21

BS EN 61439-1 Low-voltage switchgear and controlgear assemblies. Part 1: General rules				
Clause/Sub-clause	Clause / Requirements	Conformance Code	Evidence Reference	Remarks / Comments
7.1.1 Ambient Air Temperature	$\leq 40^{\circ}\text{C}$ $\text{Av over 24hr} \leq 35^{\circ}\text{C}$			
7.1.2 Humidity	$\leq 50\%$ at 40°C			
7.1.3 Pollution Degree	2			
8.1.2 Protection against Corrosion	According to 10.2.2 (severity test A)			
	10.2.2 of BS EN 61439-5			
8.2.1 Protection against Mechanical Impact	According to 10.2.6			
8.2.2 Degree of Protection	IP41B to BS EN 60529			
	According to 10.3			
8.4.1 Protection against Electric Shock	Min IP2X to BS EN 60529, otherwise IPXXB.			

Document Reference:		NPS/002/032	Document Type:		Code of Practice			
Version:	3.0	Date of Issue:	January 2021		Page:	14	of	21

Appendix 4 – Addendum to Supplier Requirements

No information added.

Document Reference:		NPS/002/032	Document Type:		Code of Practice			
Version:	3.0	Date of Issue:	January 2021		Page:	15	of	21

Appendix 5 – Pre-commission Testing, Routine Inspection and Maintenance Requirements

Suppliers shall provide details of the recommended pre-commission testing and inspection required.

They shall also provide information regarding periodic inspection and maintenance requirements to be undertaken during the lifetime of their product.

Detailed inspection and maintenance instructions shall be also be provided.

Document Reference:		NPS/002/032	Document Type:		Code of Practice			
Version:	3.0	Date of Issue:	January 2021		Page:	16	of	21

Appendix 6 – Technical Information Check List

The following information shall be provided by the supplier for technical review by Northern Powergrid. Additional information shall be provided if requested.

Requirement	Provided (Y/N)
Full product descriptions and part number/reference	
Appendix 3 – completed self-certification conformance declaration	
Complete set of drawings for each variant	
Type test evidence	
Routine test plan (example)	
Pre-commissioning testing/inspection requirements	
Recommended periodical inspection and maintenance requirements	
Packaging/delivery information	

Document Reference:		NPS/002/032	Document Type:		Code of Practice			
Version:	3.0	Date of Issue:	January 2021		Page:	17	of	21

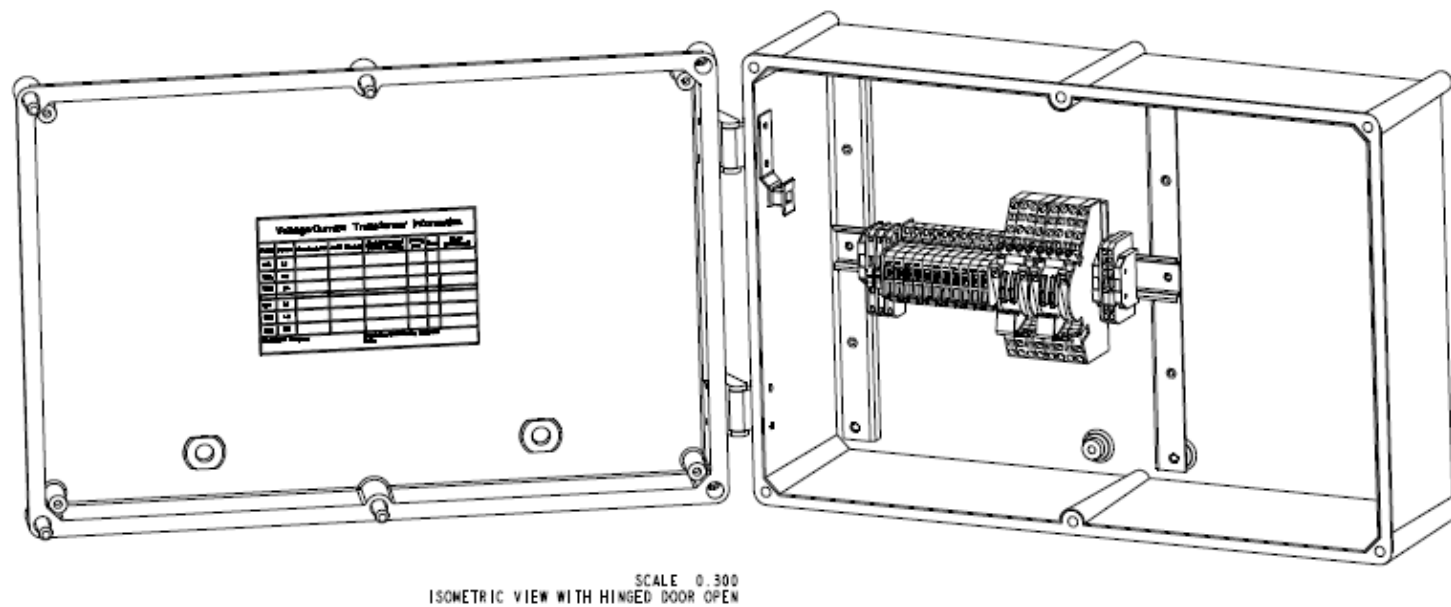
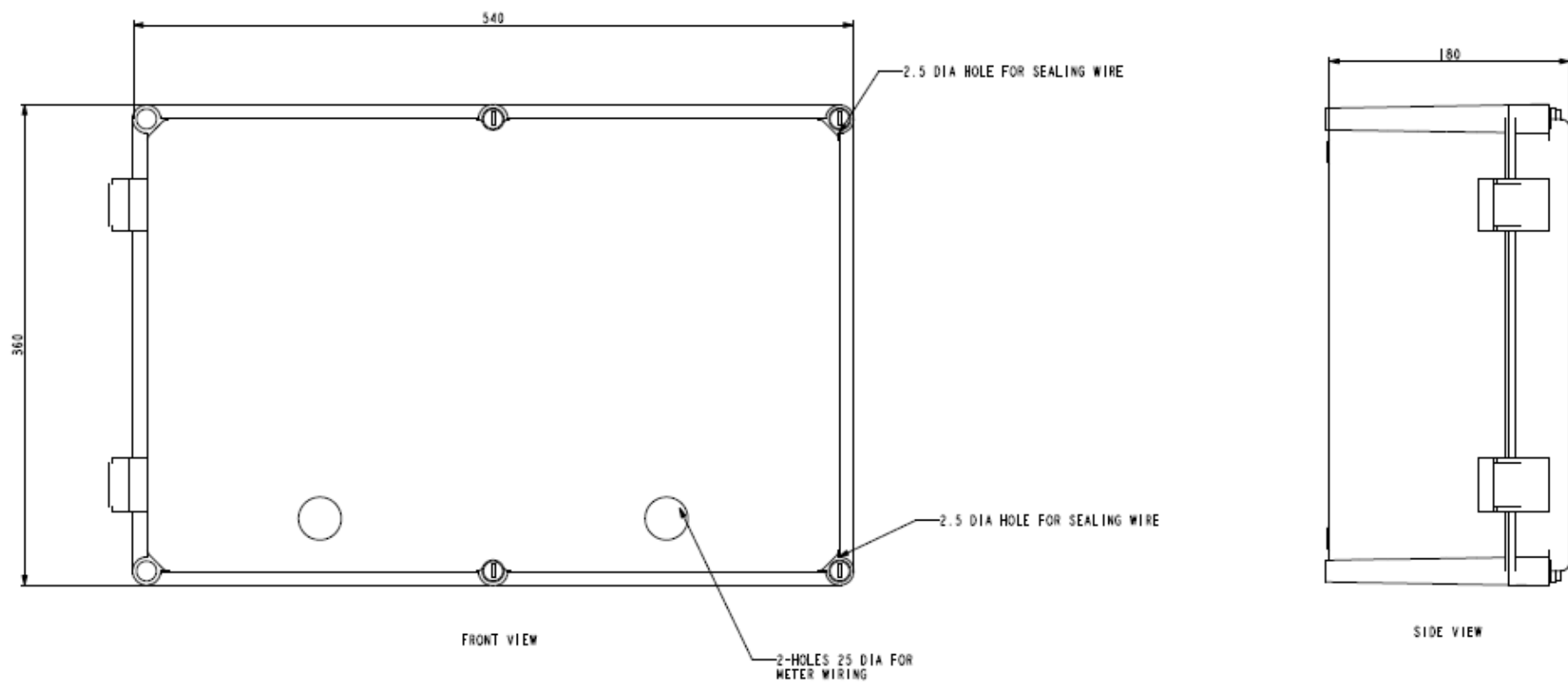
Appendix 7 – List of Example Meter Types

The following details the types of meters that may be employed with the metering base/panel unit described within this document.

- Secure Premier Meter
- Elster A1120/40 Meter
- EDM I MK 10A

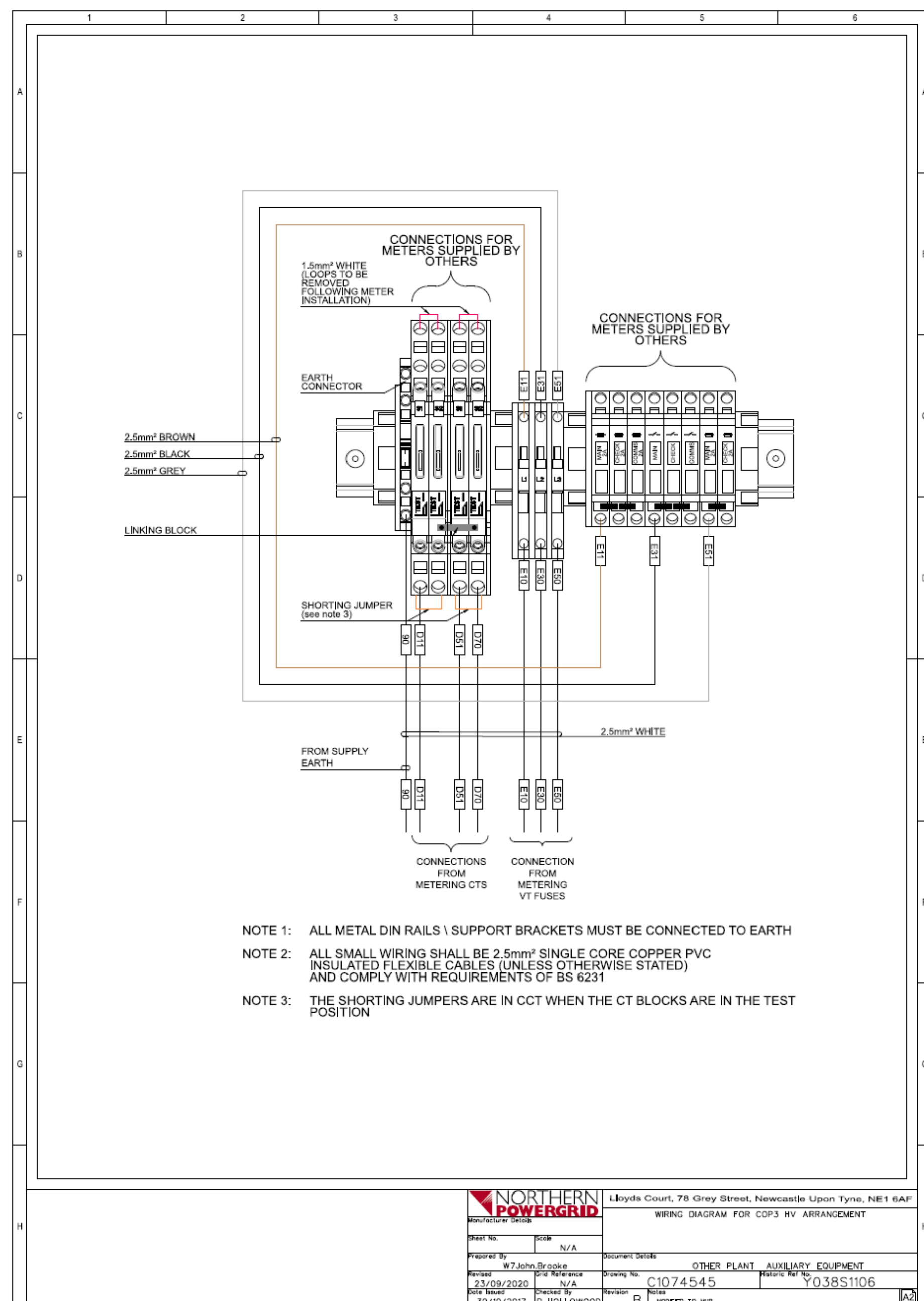
Document Reference: NPS/002/032		Document Type: Code of Practice	
Version: 3.0	Date of Issue: January 2021	Page: 18	of 21

Appendix 8 – Metering Base/Panel Unit for CoP3 Arrangement – Typical Example



Document Reference:	NPS/002/032	Document Type:	Code of Practice
Version:	3.0	Date of Issue:	January 2021
		Page:	19 of 21

Appendix 9 – Terminal Test Block – Typical CoP3 Layout



Document Reference:	NPS/002/032	Document Type:	Code of Practice		
Version:	3.0	Date of Issue:	January 2021	Page:	20 of 21

Appendix 10 - CT and Metering Voltage Fuses/Links – Labelling

Voltage Conductor		
Voltage Conductor	Between mvf/l and ttb voltage link	Between ttb voltage link and ttb fuse/link
L1	E10	E11
L2	E30	E31
L3	E50	E51

CT Output Conductor	
CT Output Conductor	Between S1 on CT and ttb
L1	D11
L3	D51

CT Return Conductor	
CT Return Conductor	Between S2 on CT and ttb
L1	D10
L3	D50

Combined CT Return Conductor
Between S2 on CTs and ttb where CT return conductors are combined
D70

Earth Conductor
90

- Key:
- Mvf/l = metering voltage fuse/link
- ttb = terminal test block

Document Reference:		NPS/002/032	Document Type:		Code of Practice		
Version:	3.0	Date of Issue:	January 2021		Page:	21	of 21

Appendix 11 –CT/VT Metering Unit Label

CT and VT Metering Equipment Label Information							
CT/VT	Phase	Manufacturer	Serial Number	Single/Dual/Multi (Ratios Available)	Rating (VA)	Class	CT Ratio Connected
CT	L1						
CT	L3						
VT	L1						
VT	L2						
VT	L3						

Distributor Company: Northern Powergrid	Installation/Commissioning Engineer:	Date: / /
--	---	------------------